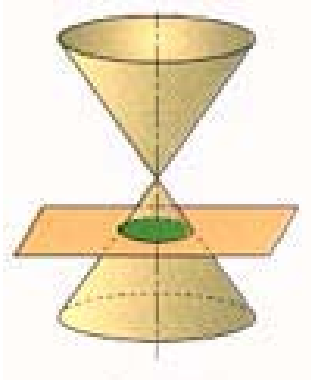
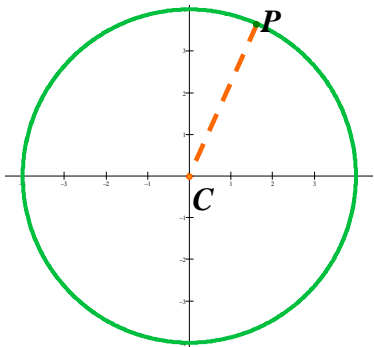


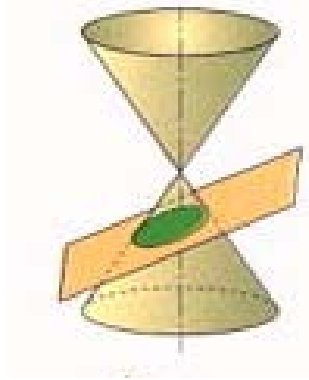
LAS SECCIONES CÓNICAS



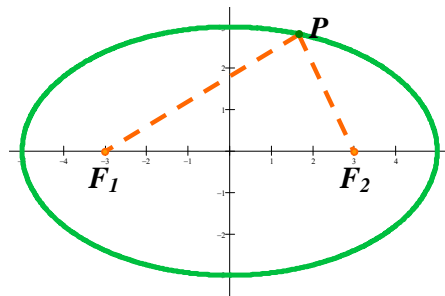
Circunferencia



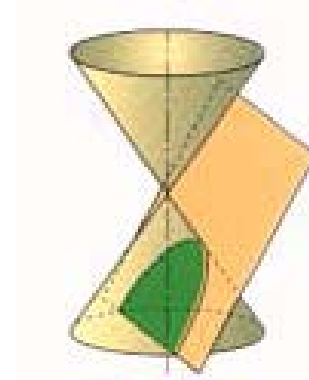
$$\text{distancia}(P,C) = \text{radio} = \text{cte}$$



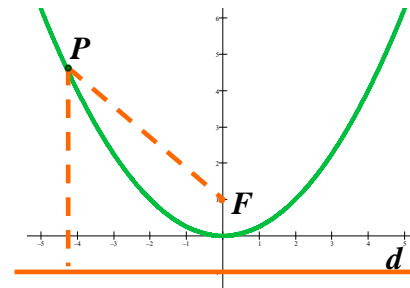
Elipse



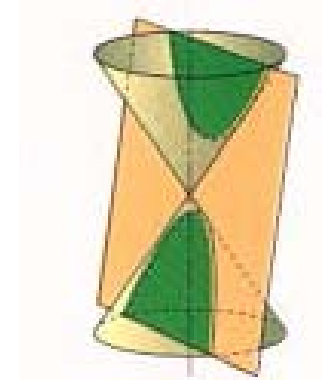
$$\text{dist}(P,F_1) + \text{dist}(P,F_2) = \text{cte}$$



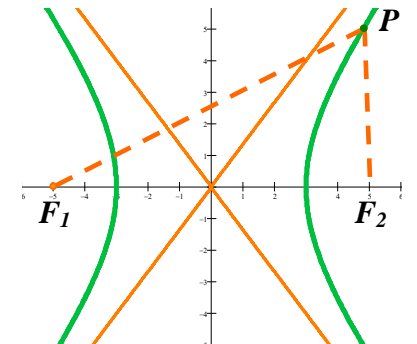
Parábola



$$\text{dist}(P,F) = \text{dist}(P,d)$$



Hipérbola



$$|\text{dist}(P,F_1) - \text{dist}(P,F_2)| = \text{cte}$$